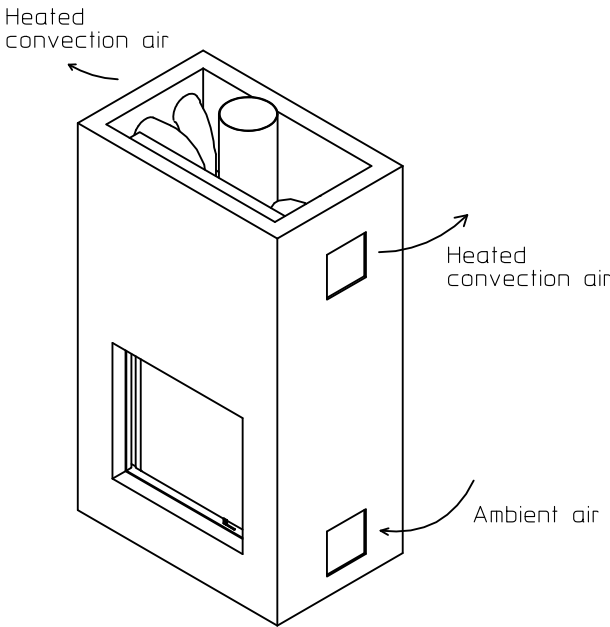
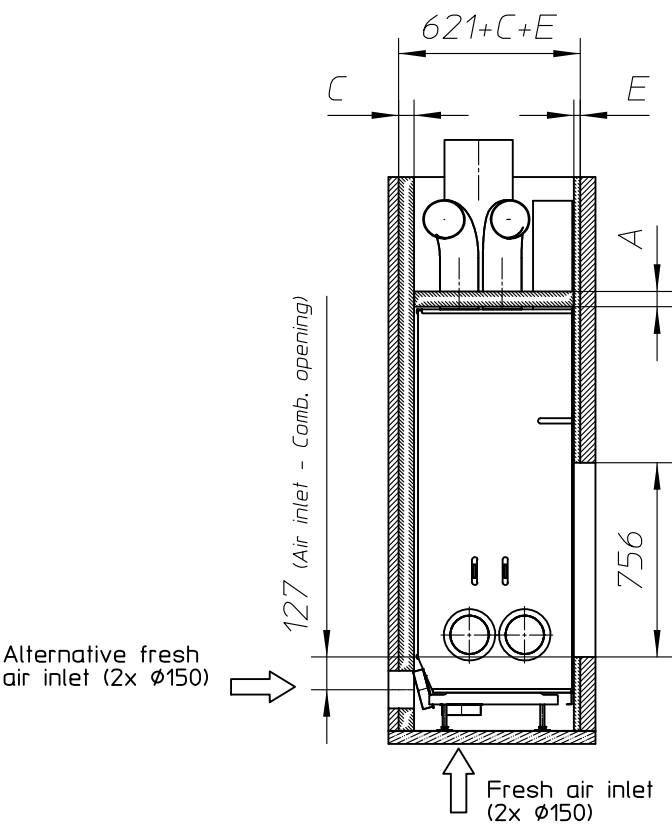
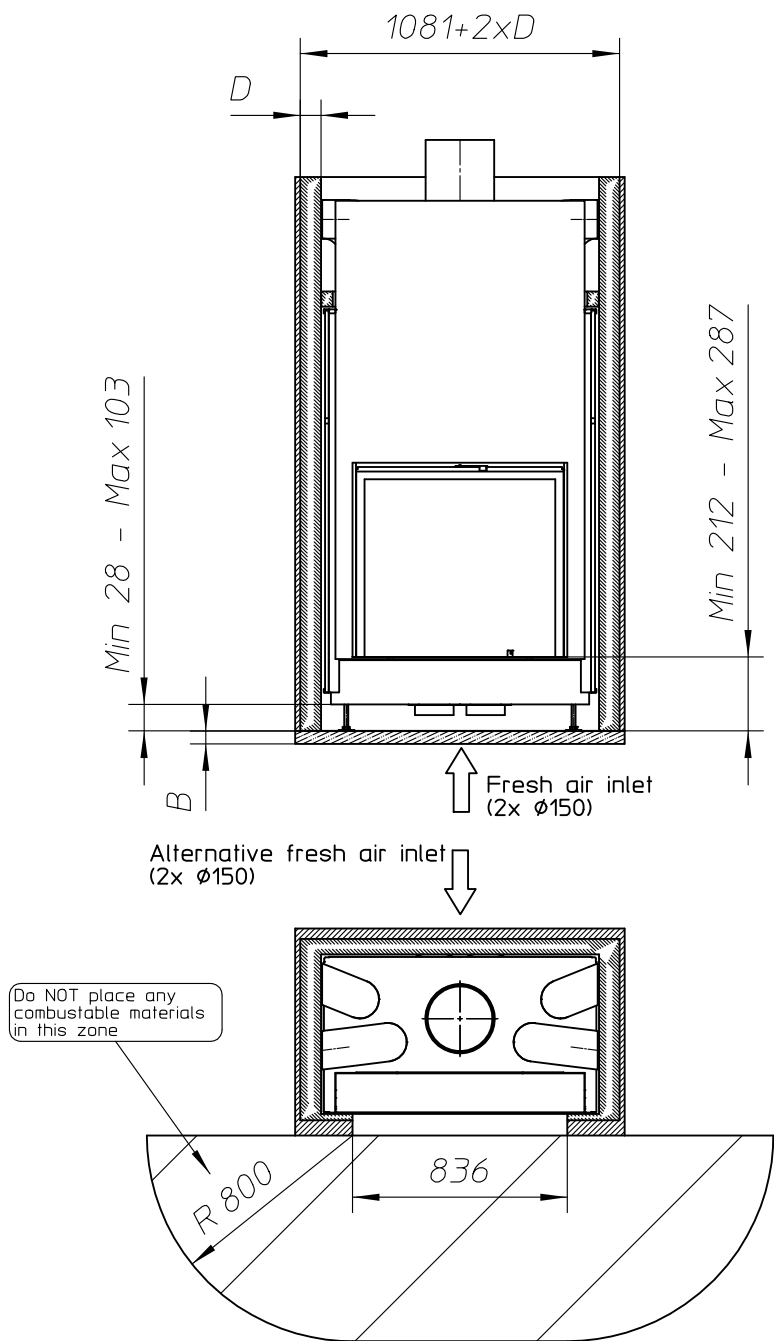




Without finishing frame



# ULTIME D Patented

## metalfire

### Technical Document

Model: ULTIME D MF 800-75 WHE 1S

- Dimensions (mm)**
- combustion opening WxH: 836x756
  - external WxDxH: 1060x619x2061
  - fresh air: 2xØ150
  - diameter flue: Ø250

- Technical Data**
- capacity: 21.5kW
  - efficiency capacity: 80.1%
  - CO (volume with 13%O<sub>2</sub>): 0.08%
  - dust (volume with 13%O<sub>2</sub>): 30mg/m<sup>3</sup>
  - weight: 435kg
  - Air intake to convection: minimum 720cm<sup>2</sup> (4xØ150)
  - Air exhaust to convection: minimum 720cm<sup>2</sup> (4xØ150)

- Specifications**
- inside finishing: heat-resistant black paint
  - vermiculite insulation plates
  - convection jacket in galvanized steel
  - cast iron stoke grate
  - back and sides: ribbed cast iron
  - interior finishing: ORIGINAL (ribbed cast iron)

- Options**
- Promat insulation kit
  - Finishing frame

Table: prescribed insulation thickness (mm)

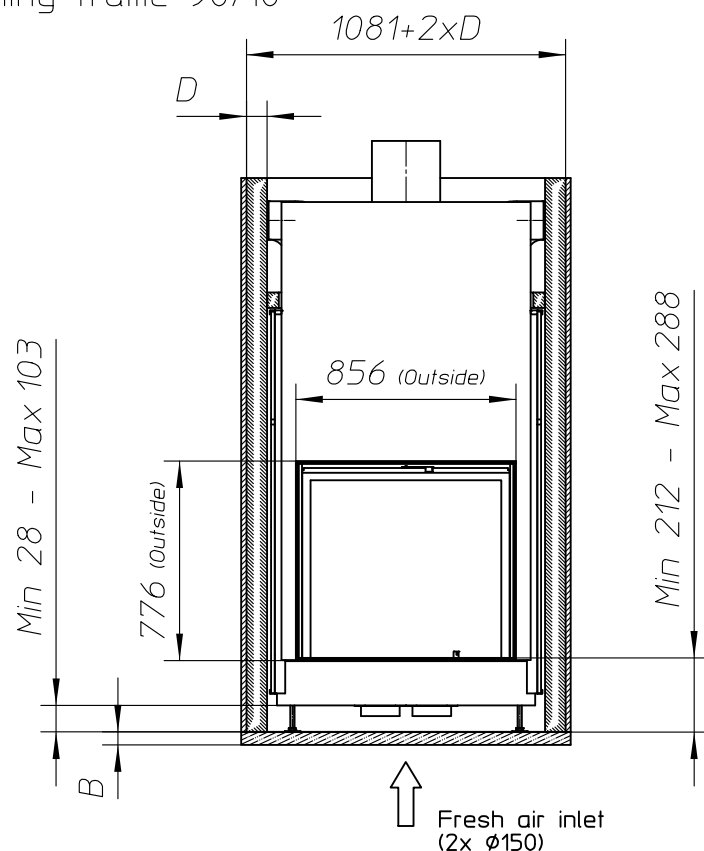
Combustable finishing material					
	A	B	C	D	E
Test report (TC = 0,14 W/mK)	102	NC	98	133	40
Metalfire recommended Promasil 1100L (TC = 0,081 W/mK)	60	NC	60	80	25
Non-combustable finishing material					
non-combustable materials (structural building items EXCLUDED e.g. load bearing walls)	0	0	0	0	0
TC = thermal conductivity NC = non-combustable					

**First aid and technical support:**

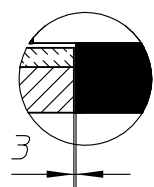
- support@metalfire.eu
- +32 (0)9 261 50 57

scale 1:25	Rev. A
www.metalfire.eu EN 13229	CE
General dimensional tolerances up to 6mm Metalfire preserves the right to modify specifications without previous notice	Sheet 2/5

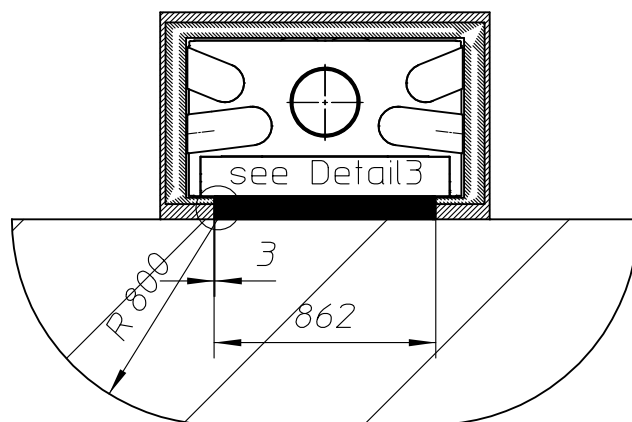
With finishing frame 90/10



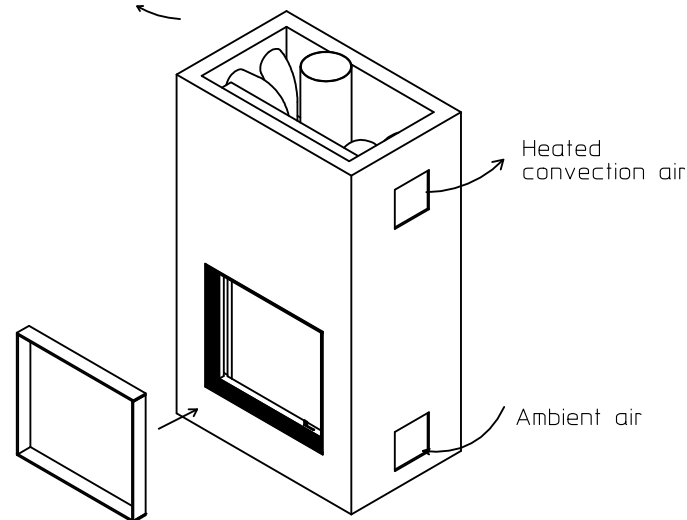
Detail3  
Scale 1:10



Alternative fresh air inlet  
(2x  $\phi 150$ )



Heated convection air



ULTIME D Patented

metalfire

## Technical Document

Model: ULTIME D MF 800-75 WHE 1S

### Dimensions (mm)

- combustion opening WxH: 836x756
- external WxDxH: 1060x619x2061
- fresh air: 2x $\phi 150$
- diameter flue:  $\phi 250$

### Technical Data

- capacity: 21.5kW
- efficiency capacity: 80.1%
- CO (volume with 13%O<sub>2</sub>): 0.08%
- dust (volume with 13%O<sub>2</sub>): 30mg/m<sup>3</sup>
- weight: 435kg
- Air intake to convection: minimum 720cm<sup>2</sup> (4x $\phi 150$ )
- Air exhaust to convection: minimum 720cm<sup>2</sup> (4x $\phi 150$ )

### Specifications

- inside finishing: heat-resistant black paint
- vermiculite insulation plates
- convection jacket in galvanized steel
- cast iron stoke grate
- back and sides: ribbed cast iron
- interior finishing: ORIGINAL (ribbed cast iron)

### Options

- Promat insulation kit
- Finishing frame

### Table: prescribed insulation thickness (mm)

Combustable finishing material					
	A	B	C	D	E
Test report (TC = 0,14 W/mK)	102	NC	98	133	40
Metalfire recommended Promasil 1100L (TC = 0,081 W/mK)	60	NC	60	80	25
Non-combustable finishing material					
non-combustable materials (structural building items EXCLUDED e.g. load bearing walls)	0	0	0	0	0
TC = thermal conductivity NC = non-combustable					

### First aid and technical support:

- support@metalfire.eu
- +32 (0)9 261 50 57

scale 1:25

www.metalfire.eu EN 13229

General dimensional tolerances up to 6mm  
Metalfire preserves the right to modify specifications without previous notice

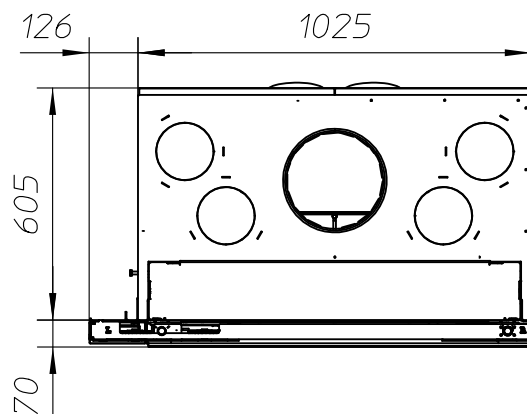
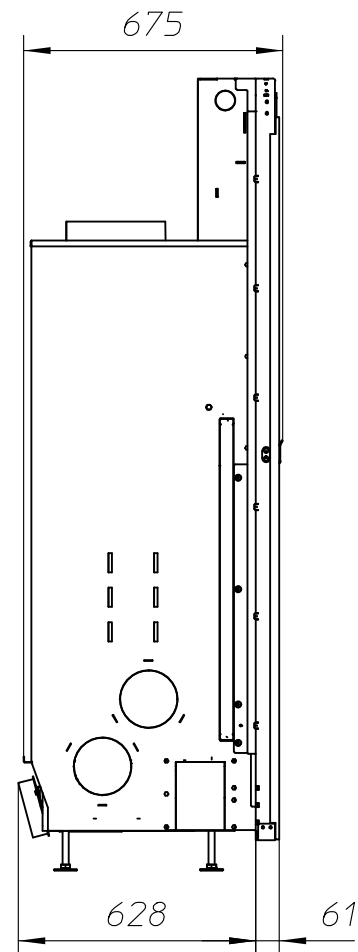
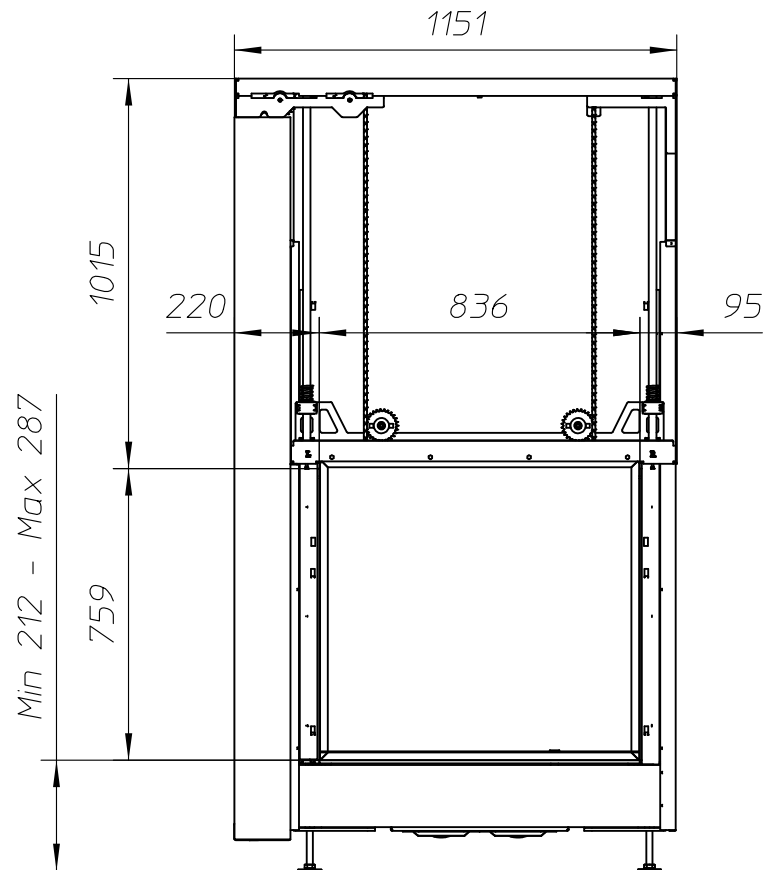
Rev.  
A

CE

Sheet  
3/5

- Combustable finishing material
- Non-combustable finishing material
- Insulation
- Insulation thickness => see table

WITH FIRESCREEN - NO FINISHING FRAME



ULTIME D Patented

metalfire

## Technical Document

Model: ULTIME D MF 800-75 WHE 1S

### Dimensions (mm)

- combustion opening WxH: 836x756
- external WxDxH: 1151x675x2061
- fresh air: 2x $\varnothing$ 150
- diameter flue:  $\varnothing$ 250

### Technical Data

- capacity: 21.5kW
- efficiency capacity: 80.1%
- CO (volume with 13%O<sub>2</sub>): 0.08%
- dust (volume with 13%O<sub>2</sub>): 30mg/N<sup>3</sup>
- weight: 435kg
- Air intake to convection: minimum 720cm<sup>2</sup> (4x $\varnothing$ 150)
- Air exhaust to convection: minimum 720cm<sup>2</sup> (4x $\varnothing$ 150)

### Specifications

- inside finishing: heat-resistant black paint
- vermiculite insulation plates
- convection jacket in galvanized steel
- cast iron stake grate
- back and sides: ribbed cast iron
- interior finishing: ORIGINAL (ribbed cast iron)

### First aid and technical support:

- support@metalfire.eu
- +32 (0)9 261 50 57

scale 1:20

Rev.  
A

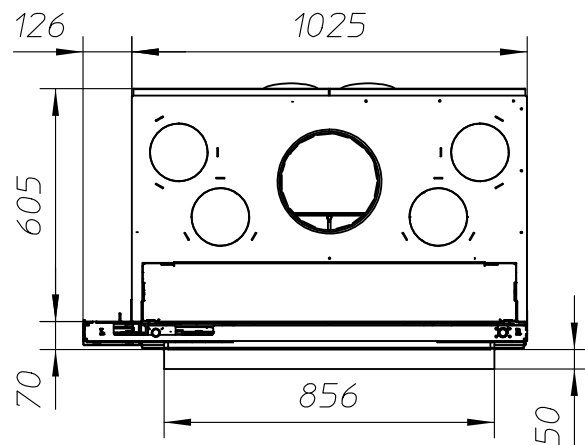
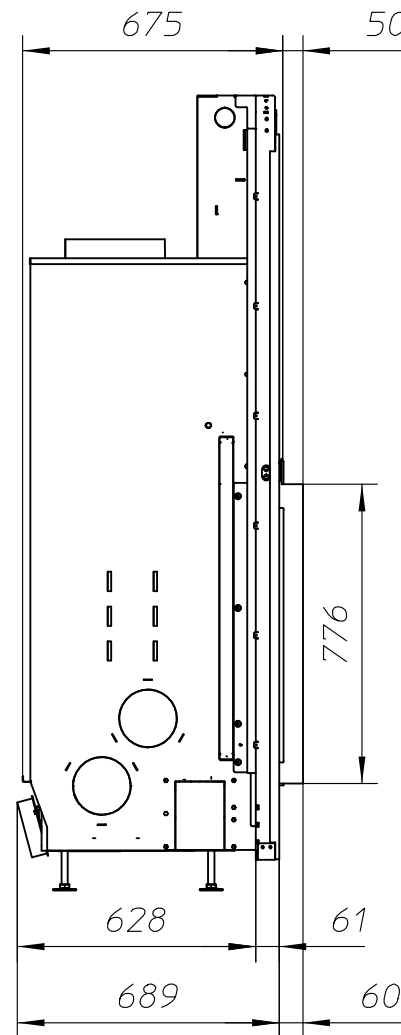
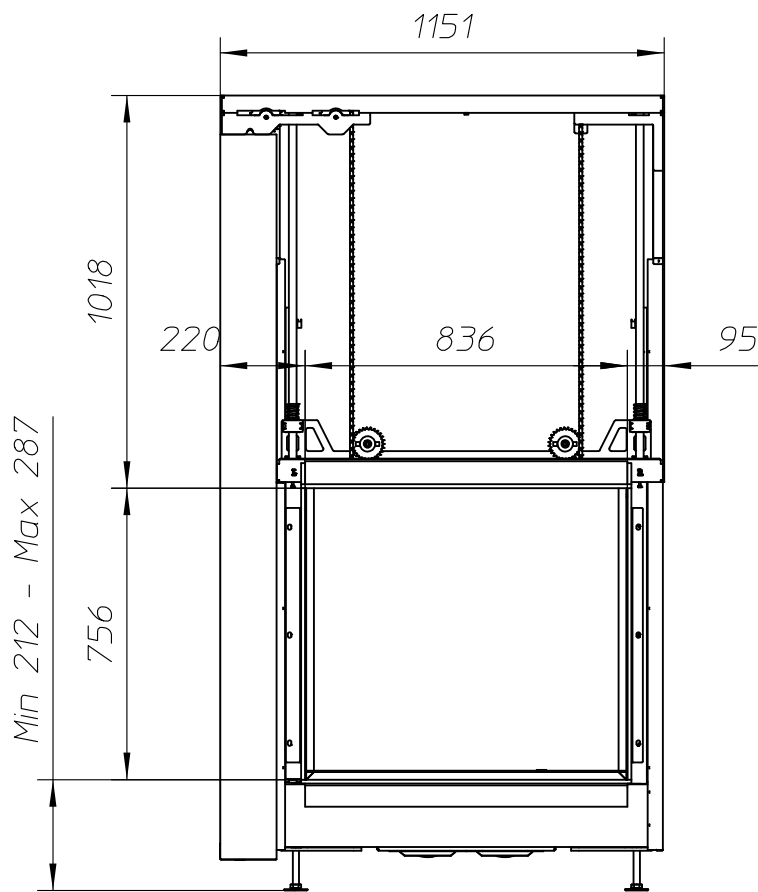
www.metalfire.eu EN 13229

CE

General dimensional tolerances up to 6mm  
Metalfire preserves the right to modify specifications without previous notice

Sheet  
4/5

WITH FIRESCREEN AND FINISHING FRAME 120/10



ULTIME D Patented

metalfire

## Technical Document

Model: ULTIME D MF 800-75 WHE 1S

### Dimensions (mm)

- combustion opening WxH: 836x756
- external WxDxH: 1151x725x2061
- fresh air: 2x $\varnothing$ 150
- diameter flue:  $\varnothing$ 250

### Technical Data

- capacity: 21.5kW
- efficiency capacity: 80.1%
- CO (volume with 13%O<sub>2</sub>): 0.08%
- dust (volume with 13%O<sub>2</sub>): 30mg/N<sup>3</sup>
- weight: 435kg
- Air intake to convection: minimum 720cm<sup>2</sup>(4x $\varnothing$ 150)
- Air exhaust to convection: minimum 720cm<sup>2</sup>(4x $\varnothing$ 150)

### Specifications

- inside finishing: heat-resistant black paint
- vermiculite insulation plates
- convection jacket in galvanized steel
- cast iron stoke grate
- back and sides: ribbed cast iron
- interior finishing: ORIGINAL (ribbed cast iron)

First aid and technical support:

- support@metalfire.eu
- +32 (0)9 261 50 57

scale 1:20

www.metalfire.eu EN 13229

General dimensional tolerances up to 6mm  
Metalfire preserves the right to modify specifications without previous notice

Rev.  
A

CE

Sheet  
5/5